

# Empathy's Role in the Classroom

Ms. Andrea Dawn Short



# More Than Students



ADS Design  
2020

- Variety of needs due to different incoming academic and emotional foundations
- Personalities that can potentially clash or mesh with the staff
- Outside barriers that might impact academic progress

"I genuinely love learning about the beautiful human complexities of each new student I come in contact! This attitude keeps my teaching



philosophy progressing and transforming."



The Excel Center

goodwill

# Why is Empathy Needed?



ADS Design  
2020

WE FEEL  
**S**YMPATHY  
TOWARDS

Feelings of pity and sorrow for someone else's misfortune.

WE ENDURE  
**E**MPATHY  
WITH

The ability to understand and share the feelings of another.

WE HAVE  
**A**PATHY  
ALONE

Lack of interest, enthusiasm, or concern.

- Empathy leads to the development of a positive classroom environment
  - Students sense when a teacher is apathetic or fake and are less motivated to learn



# Educators



ADS Design  
2020



- Variety of backgrounds that each educator brings to each center
- All want to present innovative ideas to the curriculum



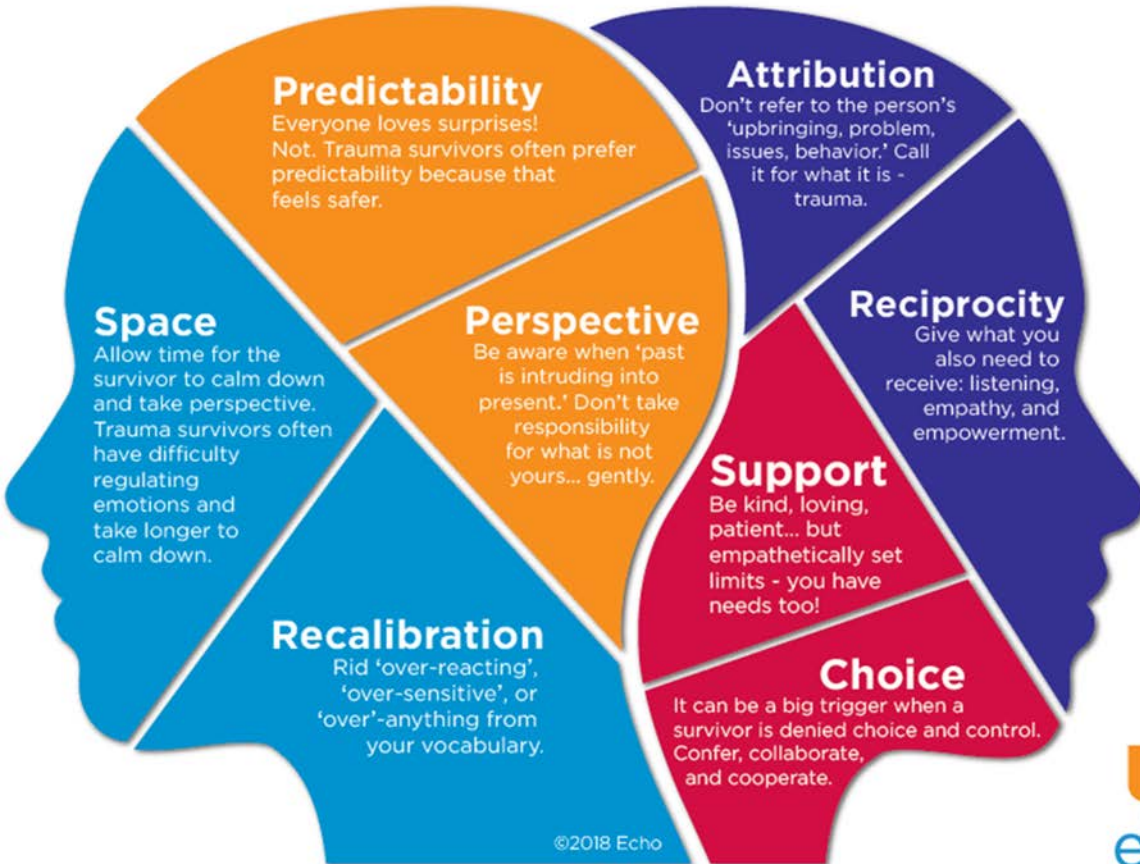
“To educate a man in mind and not in morals is to educate a

menace to society.”

~ Theodore



# How to Support Someone Who Has Experienced Trauma

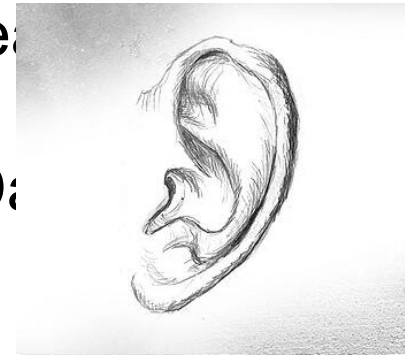
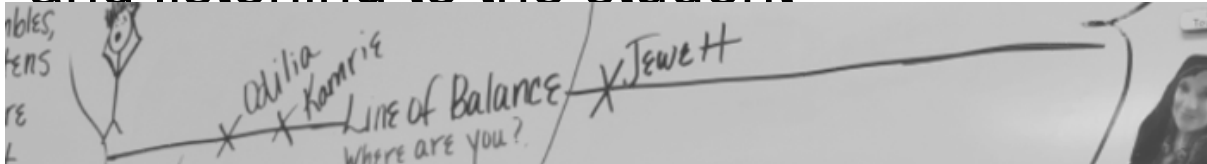


# Creating a Genuine Connection



ADS Design  
2020

- Unique Students + Motivated Educators = Innovative & Wildly Progressive Education
- Active Listening: The difference between hearing and listening to the student



ent

t

- Making your curriculum flexible... some days maybe the student knows best?

Unpopular opinion: Weed isn't a gateway drug.  
Alcohol isn't a gateway drug. Nicotine isn't a  
gateway drug. Caffeine isn't a gateway drug.


Trauma is the gateway. Childhood abuse is the  
gateway. Molestation is the gateway. Neglect is  
the gateway. Rape is the gateway.

Drug abuse, violent behavior, hypersexuality,  
self harm (etc) are often the symptoms (not  
the causes) of bigger issues. And it almost  
always stems from a childhood filled with  
trauma, absent parents, and abusive family.

But y'all too busy laughing at the homeless, the  
crackheads, and meth addicts to realize that  
your own kids could be in their shoes in 15  
years.

Communicate. Empathize. Rehabilitate.

Life Space Crisis Intervention Institute

YESTERDAY AT 8:26 PM  ENLIGHTENED  
CONSCIOUSNESS

**Our students come to us for their high  
school diploma. While they leave us  
with much more, we must remember  
that we also gain knowledge and  
experience from every student we  
instruct. We are all blessed.**

**One more nugget of truth...Empathy is  
not only good for the classroom but  
also society.**

